



Eclipse Opening Roof



Open up to a world of possibilities

Versatility



Versatility

The Eclipse can be built as a commercial awning or patio cover, as a roof for glass or screened enclosures, or to cover a swimming pool.

The Eclipse Opening Roof can be installed flat, pitched, curved, angular or used vertically as a privacy screen. The smooth flowing lines, together with an extensive colour range and choice of finishes, allows the Eclipse to blend brilliantly with any architectural style.

For added comfort and convenience the Eclipse Opening roof can be completely meshed-in, both top and sides, creating an effective barrier against disturbing insects.



Comfort Control

Summer or Winter – The Eclipse Opening Roof provides the best of both worlds!

In summer, block out the heat and keep cooling costs down by simply closing the roof or opening it partially for shaded ventilation. The Eclipse provides the ultimate control over the amount of shade you need. For those with sensitive skin or those concerned about health risks due to sun exposure, the Eclipse is the perfect answer – full light can be enjoyed without direct sunlight.

During the summer months a place is often sought providing shade from the sun's heat with cool ventilation. The Eclipse offers a solution, as natural convection draws the warm air up through the open louvres to give you cooling breezes below.

In winter the slim line louvres can be positioned to allow the sun's natural warmth & light into rooms to save on energy costs. With the simple push of a button, the louvres can be moved to give the desired lighting level into a room, office or building. This natural light illuminates work and living areas while providing savings in power consumption.

In an outdoor area the same push of a button allows you to control the light needed to create the right atmosphere. The Eclipse Opening Roof has a uniquely designed louvre that provides complete overlap and maximum rain protection. In light rain the louvres can even be left partially open and the water will drain away in the contours of the louvre.



Household Comfort

The Eclipse Opening Roof creates a visually stunning and functional outdoor living area all year round.

Whether it is a pitched, flat or angled roof, you can design an Eclipse Opening Roof to suit the personal style of your home.

The Australian designed one-piece extruded aluminium louvre and stainless steel components are engineered to the highest standards, making the Eclipse suitable for extreme heat, strong winds and corrosive coastal conditions.

Not only can the Eclipse lower your energy costs, but provide many years of enjoyable trouble-free operation.



Architectural



Architectural Style

Architects and building designers rely on flexibility and high quality products in order to achieve a credible long-term endorsement of their creative abilities.

The Eclipse Opening Roof and Sun Louvre System provide a reliable and stylish option to enhance the outdoor living areas of both residential and commercial developments.

The integrity of the Eclipse has been proven in both the national and international arena of architectural design.



Design



The Sun Louvre Range - Elliptical Louvres

This new louvre has been designed to compliment the Eclipse louvre range and add a new dimension of style to offices and homes alike.

The Sun Louvre is great in vertical or horizontal arrangements to create window awnings, privacy screens, wind & sun blocks. It can also be designed as a roof shade structure.

The Sun Louvre is not designed to be a water tight product but as the name suggests it is instead a sun shade system built vertically or horizontally with opening or fixed louvres capable of almost limitless designs.

Vertical applications - Shade screens for office blocks. Privacy screen for balconies, windows & unit complexes. Window furnishings fitted internally or externally.

Horizontal applications - Patio/Shade awning for pergola areas, balconies & yards requiring shade protection and privacy.

The beauty of the Sun Louvre is not just its designer shape but also the functional control it provides over the weather into your office, room or entertaining area. At the push of a button you control the amount of heat, light & ventilation.

Imagine the energy savings with the Sun Louvre system fitted to an office building or home areas exposed to the elements.

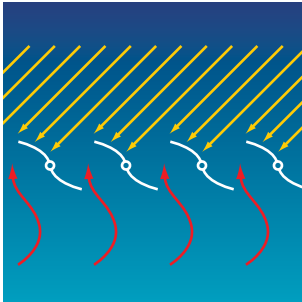
Sun Louvre Features and Benefits

- Fixed or opening Sun Louvres add privacy and security
- Reduces internal temperatures
- External Sun Louvres lower air conditioning costs
- Can be fitted both vertically and horizontally, internally or externally
- Can be motor operable or fixed
- Elegant and smooth designer shape
- Range of sizes available to compliment any architectural style
- Optional electronic sun tracking for sun/shade control



Benefits

OPEN for summer shade and ventilation

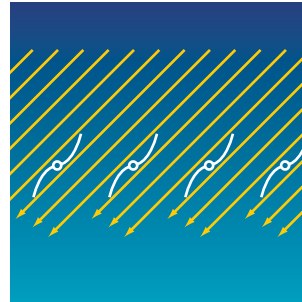


For SHADE, angle the louvres against the sun and still enjoy plenty of light.

Natural ventilation is created by air passing through louvres to provide cooling breezes.

Shade protection for people and buildings.

OPEN for winter sun



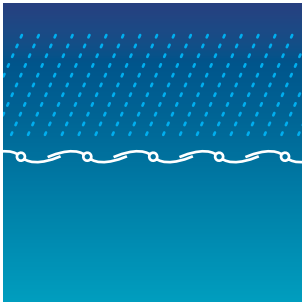
In cooler weather enjoy the natural WARMTH of sunlight through the louvres.

Maximum light available.

Warmth into rooms and outdoor areas.

Passive solar heating.

CLOSED tight for rain protection

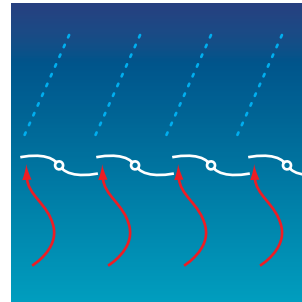


Louvres interlock to keep out the weather.

Deep channels in each louvre carry water away to surrounding gutter.

No need to move inside when it starts to rain.

OPEN for rain protection and ventilation

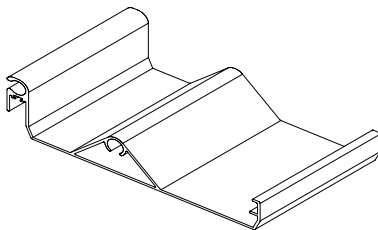


With louvres opened a small distance, protection is still provided for light rain.

Ventilation and shade protection is achieved.

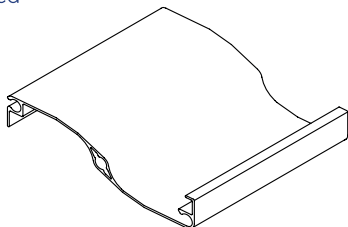
Great for warm humid conditions or when there are occasional light showers.

Eclipse Flat



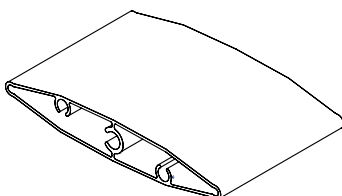
160mm

Eclipse Curved



165mm

Eclipse Sun Louvre



90mm
133mm
160mm
200mm



conditions apply

Eclipse Opening Roof Features & Benefits

- Allow warmth into rooms for comfort
- Opened louvres reflect light into South facing areas
- Added cooling and greater comfort
- Cold and dark rooms are brought to life with natural light
- Complete control is available
- There is no need to move inside when it rains
- Catch the rain while partially open to allow ventilation
- Particularly beneficial for warm humid conditions
- Tailored to individual needs to add value and style
- Years of trouble free service, protection from hail, debris etc.
- Low maintenance
- Colour matched to your personal tastes
- Peace of mind that you have the best
- Easy to use, safe and uses little or no electricity

Control

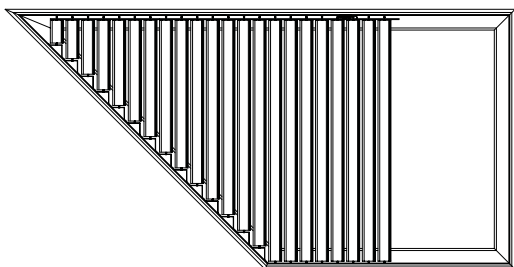


Control Systems

The louvres rotate from closed to almost 180 degrees by use of an efficient 12 volt DC motor which is powered by either a solar charged battery or a transformer connected to a power outlet. This makes the Eclipse safe to use and incredibly easy to operate with your choice of control systems: Rain Sensor Systems, Remote Control, Connect to your Home Automation system, open/close touchpad & open/close toggle switch systems. There is a control system right for you and your home.

Construction

The Eclipse system is comprised of aluminium and '316' stainless steel components with a high level of corrosion resistance. The solid extruded aluminium louvres are powder coated or anodised for years of trouble free service and come with a 10 year guarantee. Curved Louvres are 165mm wide have cover of 150mm and span up to 3.6 metres. Flat louvres are 160mm wide have a cover of 150mm and span up to 4.2 metres. Motor options will operate up to 24sq metres of louvres or 7.0 lineal metres of control-arm length. Multiple banks of louvres will provide almost limitless design options. The support structure is typically 250mm x 50mm beams and can be built from aluminium, steel, timber or any material that provides sufficient structural integrity to meet design and engineering requirements. Minimum fall required for the Eclipse system is 1 degree or 20mm per 1000mm. To complete the project the Eclipse can be installed with colour matching internal guttering, downpipes and framework.



Product Specification

Louvres - Solid extruded aluminium 6106-T6 grade with nominal thickness of 1.8mm to meet AS1866 and AS3902. Flat and curved opening roof louvres have a coverage of 150mm. Flat louvres span up to 4200mm and the curved up to 3600mm (refer to certified Engineer's Design Manual). Powder coating to meet AS3715.

Motor Pivot Pins - Solid 316 grade stainless steel with nylon bush.

Free End & Control Pins - Solid 6061-T6 grade aluminium with nylon bush.

Support Track and Lock Angles - Solid extruded aluminium 6060 - T5 grade, powder coated to AS3715.

Tested and Approved

The Eclipse has been tested and certified for use throughout Australia and overseas including cyclonic areas. The louvres are manufactured from 6061 - T6 grade aluminium to meet Australian Standards AS1866 and AS3902, and powder coated to AS3715. International approval - ICC-ES. Report ER-5776P. Eclipse Opening Roof structures designed in accordance with this manual will be structurally adequate to withstand design loads determined in accordance with the following Australian Standards Codes:

AS/NZS 1170.1:2002 - Structural design actions

AS/NZS 1170.2:2002 - Part 2 Wind actions

AS 4100 - 1998 - Steel structures

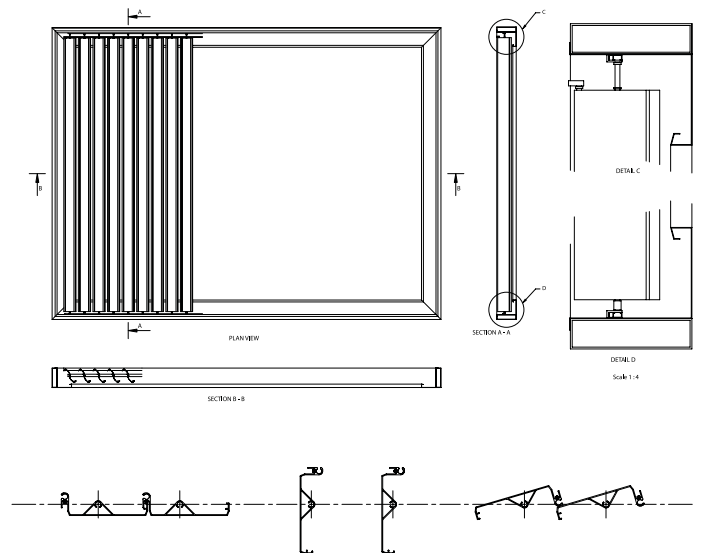
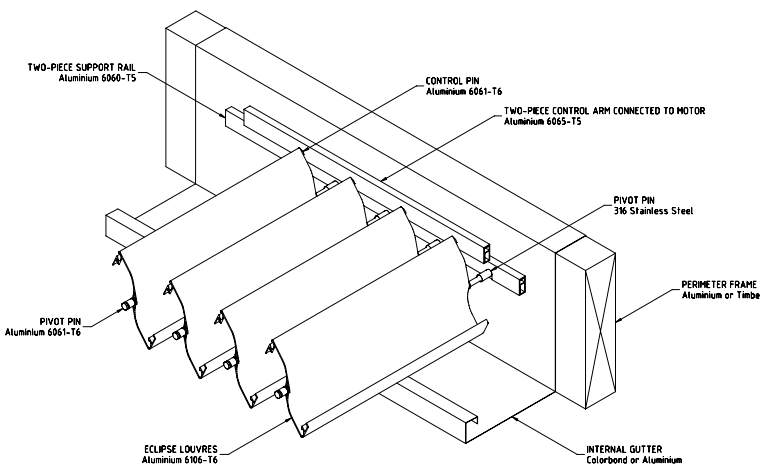
AS4055 - 1992 - Wind loads for housing

AS 1720.1 - 2006 - Timber structures Part 1: Design methods code

AS/NZS1664.1:1997 - Aluminium structures Part 1: Limit state design

Building Code of Australia 2012

Open up



RING NOW for more information
or see us on the web!

www.hv.com.au



10 Myra St New Lambton NSW 2305
Phone: 02 4903 3300 Fax: 02 4957 7880
Email: eclipse@hv.com.au
B/L 28384

For more than 35 years, HV Aluminium has been dedicated to installing in our customers the confidence to count on us by fulfilling the promise of "quality without compromise in selection, service and satisfaction". Employing the latest design and technology in our product range, HV Aluminium continues to deliver on our promise to our customers through a highly qualified network of authorised national and international dealers.